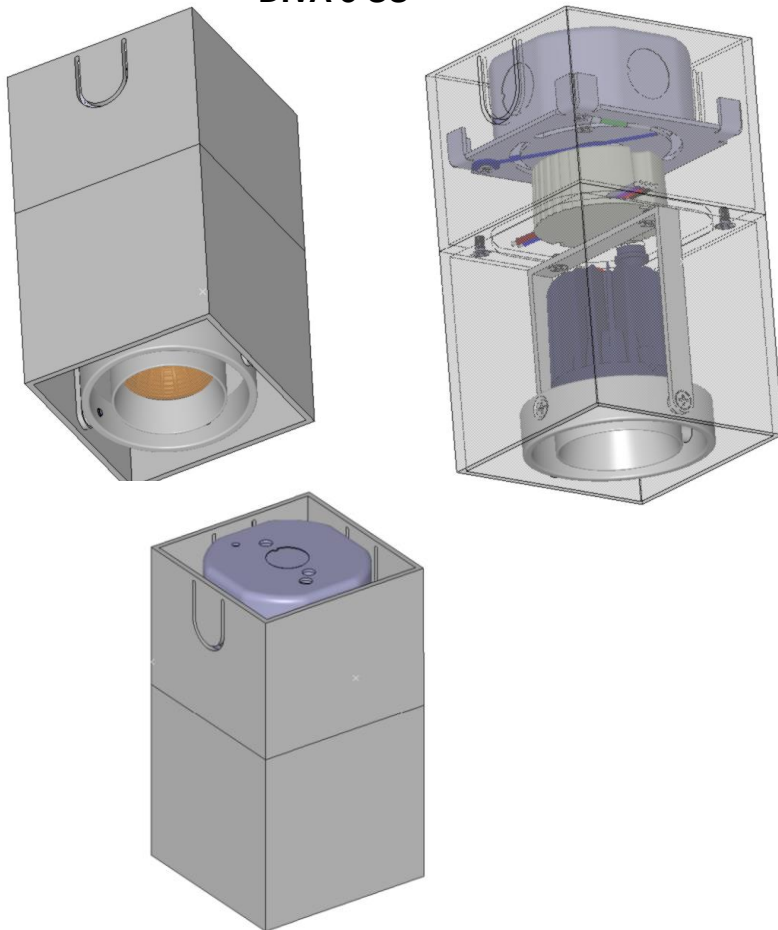


---

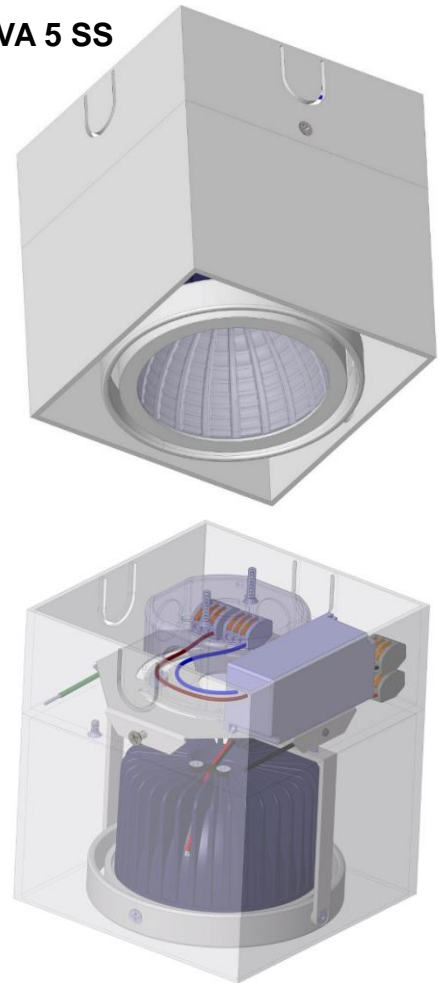
**DIVA 3/5 SURFACE MOUNTING FOR CONCRETE CEILING  
INSTALLATION INSTRUCTIONS**

---

**DIVA 3 SS**



**DIVA 5 SS**

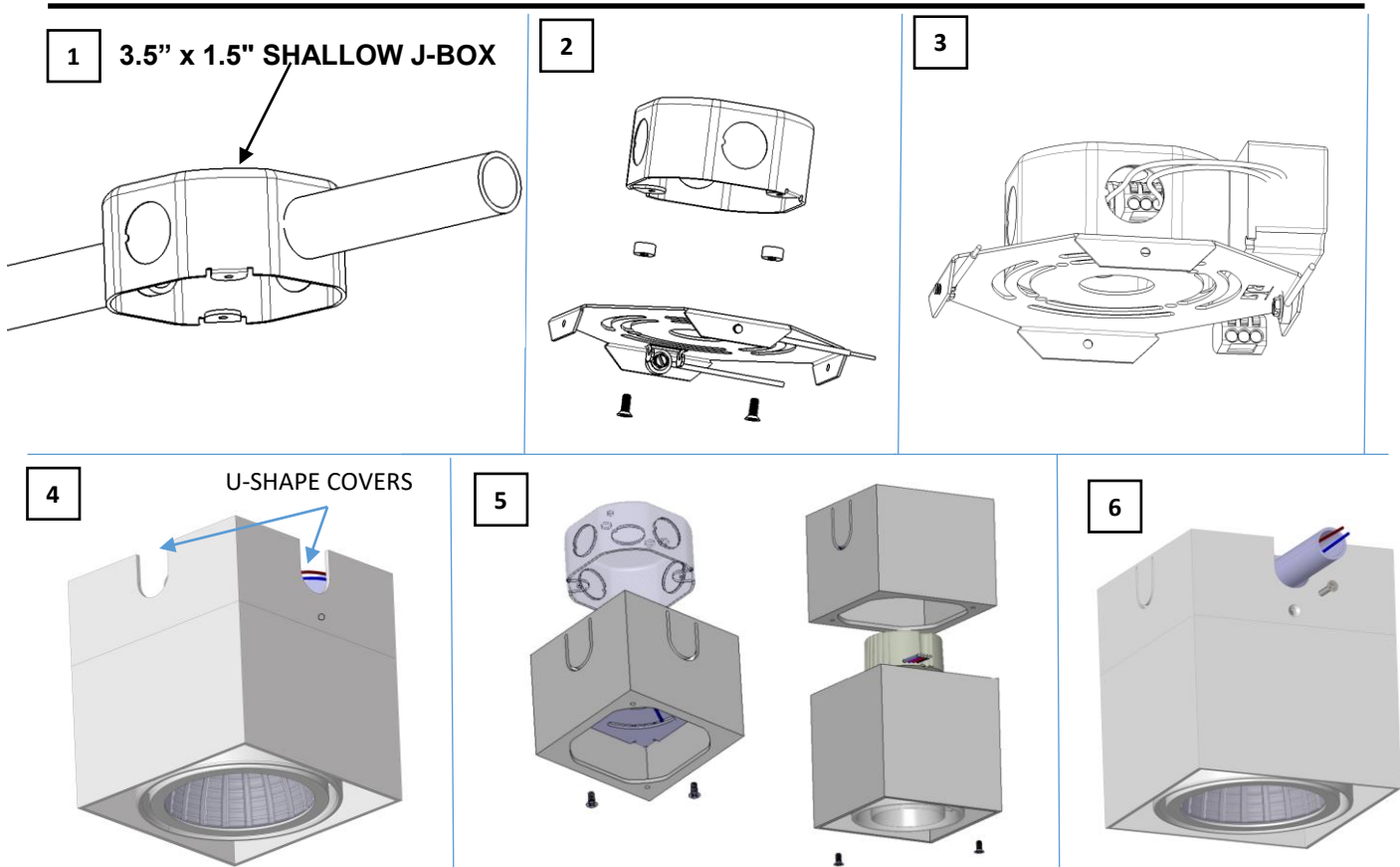


---

**WARNING - RISK OF FIRE AND ELECTRICAL SHOCK. FIXTURE MUST BE INSTALLED BY A QUALIFIED ELECTRICIAN ONLY. FIXTURE IS INTENDED FOR INSTALLATION IN ACCORDANCE WITH THE NATIONAL ELECTRICAL CODE, LOCAL AND FEDERAL SPECIFICATIONS. DISCONNECT POWER AT ELECTRICAL PANEL BEFORE SERVICING. CONNECTION OF LUMINAIRE TO POWERED DRIVER WILL RESULT IN PERMANENT DAMAGE TO THE LED AND VOIDED PRODUCT WARRANTY. RETAIN THESE INSTRUCTIONS FOR MAINTENANCE REFERENCE.**

**MATERIALS USED FOR CEILING FIXATION SHOULD CONFORM TO THE RELEVANT BUILDING REGULATIONS.**

# FIXTURE INSTALLATION



1. THE DIVA SURFACE MOUNT REQUIRES A J-BOX PREVIOUSLY INSTALLED AND WITH LINE VOLTAGE ALREADY FED TO IT.

**ATTENTION:**

**USE ONLY 3.5" x 1.5" SHALLOW J-BOXES. LARGER J-BOXES WILL IMPEDE PROPER INSTALLATION (FIGURE 1) THIS CANOPY IS MADE FOR A MAXIMUM OF 3 CONDUIT PER J-BOX CANOPY WILL NOT ALLOW FOR 4 CONDUIT.**

2. ATTACH THE GALVANIZED STEEL MOUNTING PLATE OF THE DIVA SURFACE MOUNT TO THE J-BOX BY SCREWING IT USING SPACER PROVIDED (FIGURE 2)

3. RUN THE LINE WIRES THROUGH THE MIDDLE OPENING OF THE J-BOX PLACING THE DRIVER ON TOP OF THE MOUNTING PLATE AND THE WAGO CONNECTORS INSIDE OF THE J BOX (FIGURE 3)

4. REMOVE ONE OR ALL THREE U-SHAPE COVERS IN ORDER TO RUN THE CONDUIT.(FIGURE 4)

5. ATTACH THE CANOPY COMPOSED FROM ALUMINUM BOX WELDED WITH GALVANIZED STEEL MOUNTING PLATE OF THE DIVA SURFACE MOUNT TO THE J-BOX BY SCREWING IT WITH 2 SCREWS PROVIDED BY OTHERS (FIGURE 5)

6. SECURE THE FIXTURE TO THE MOUNTING PLATE(GALVANIZED STEEL) USING THE 2 PROVIDED SCREWS SHOWN. (FIGURE 5)